

**The JCC Auditorium
Performance Equipment Inventory.**



Media Playback:

- DVD, VHS, SVHS, Beta Decks.
Christie Roadster X6 6,000 lumen digital projector with Stereo audio, Front Left and Front Right speakers.
- 35mm Film Projector.
JBL Dolby Digital with Left, Right, Center and Sub.
(Certified Projectionist Required)
- Computer Presentation utilizing the Digital Projector.
Computer can be located on the Stage or in the projection booth.
- Slide Projector with Wireless Remote.
- CD Audio.
- Cassette Audio.
- DAT Audio.
- Motorized Movie Screen. (22' wide x 11' tall)

Additional Areas:

- L2 Lobby Area.
- Green Room and Back Stage Dressing Rooms.
- Storage Area.

Stage Grid:

- Fixed Grid at 19'. (1 1/2" Steel pipe)
- 2 Motorized Pipes- 40' Length.
- 1 Non-Motorized Pipe- 30' Length.

**The JCC Auditorium
Performance Equipment Inventory.**



Lighting Equipment:

- ETC 96/48 Express Light Board. (192 Channels Max.)
- 63 x 2.4K Hard-wired ETC Sensor Dimmers. (All circuits are Dimmer Doubled)
- 48 x 2.4K ETC Touring Rack with Soco and Stagepin breakouts.

- 24- ETC S4 26 degree Lekos 550 watts
- 4- ETC S4 19 degree Lekos 550 watts
- 2- ETC S4 19 degree Follow spot 750 watts
- 42- ETC S4 36 degree Lekos 550 watts
- 26- ETC S4 Pars 575 watts
- 20- ETC S4 Pars 550 watts
- 36- ETC Jr. Zooms 550 watts
- 12- Single Cell Cyc units 1000 watts
- 10- ETC Parnells 550 watts
- 10- 18" Sidearms
- 6- 50 lbs. Boom Bases
- 6- 8' Boom Pipes
- 12- 25 lbs. Sandbags

Assorted stage cable/two-fers/smart two-fers.

Softgoods:

- Three full stage traveler tracks; with split center overlap, rope pulls located SL.
- Twelve (12) 18'-6" x 8' flat black panels; can be used for the traveler or as legs.
- Four (4) 18'-6" x 4' black panels; can be used for the traveler or as legs.
- Four (4) 16" x 8' flat black panels; can be used for the US traveler only.
- Eight (8) 10' High x 7' Wide; 4 tracks SL & 4 tracks SR under Balcony.
- One (1) 16' x 38' White muslin Cyc.

Platforms:

- 16- 4' x 4' Black platforms. (Wenger Versalite)
- 16- Sets of 12" legs.
- 10- Sets of 16" legs.
- 4- 8' x 16" skirts.

The JCC Auditorium Performance Equipment Inventory.

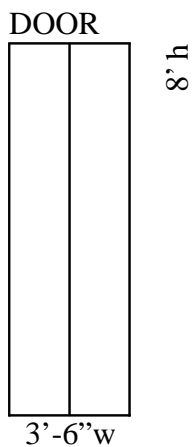


Pianos/Amps:

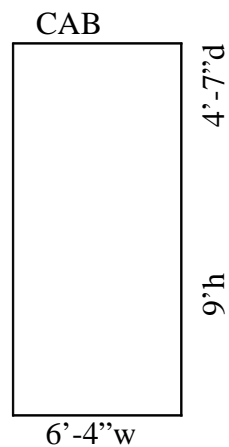
- Steinway L Baby Grand Piano. (5'-10")
- One (1) Yamaha Clavanova.
- One (1) Yamaha P-70 keyboard. (88 weighted keys)
- One (1) Yamaha YPG-225 keyboard. (76 keys)
- One (1) Fender keyboard amp with 15" speaker and two (2) inputs.
- One (1) Roland Keyboard amp with 15" speaker and three (3) inputs.
- One (1) Alesis Keyboard amp with 15" speaker and four (4) inputs.

Elevator:

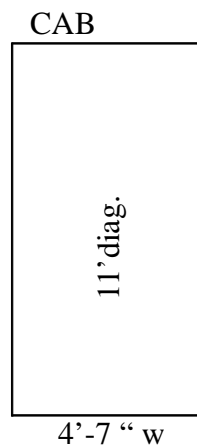
Front view:



Top view:



Side view:



The JCC Auditorium

Performance Equipment Inventory.



Sound Reinforcement:

- Crestron Century 32 (28 XLR mono, 4 XLR Stereo), 8 Bus, 8 Aux.
- Mackie SA 32.4 for additional monitor mixes.
- 32- XLR inputs and 8 XLR returns on stage.
- 2- Snakes on stage, 12 XLR inputs and 4 returns.
- 32 Channel splitter.
- 4- 12" x 1" Trapezoidal speakers – patched paired front + back.
- 2- EV SX-100 12 inch cabinets model 4-Patched stereo.
- 2- 15" x 1" JBL Patched stereo.
- 2- Lexicon MPX55 Multi effects units.
- 1- DBX-1066 2 Channel compressor.
- 1- DBX-1046 4 Channel patchable compressor.
- 2- Alesis 8 Channel digital 31 band EQ. (1 patched to mains, 1 patched to monitor sends)
- 3- QSC power amplifiers.
- 2- Denon dual CD/MP-3 players with protective case.
(Models #: Dn-D4006 & Dn-D6000)
- 4- Channel DJ Style Mixing Board.
- 4- Centara Subs.
- 8- Mackie powered monitor speakers: 4 x 350 and 4 x 450.

The JCC Auditorium Performance Equipment Inventory.



Available Microphones and stands:

- 7- SM57.
- 11- SM58.
- 2- Beta 57A.
- 5- Audio Technica shotgun mics. (3 installed in grid).
- 4- PCC.
- 2- Lectern Mics.
- 15- wireless receivers:
 - 5- AKG handhelds.
 - 2- Shure beta 58A.
 - 2- AKG 400 series with Lapel Mics.
 - 4- Shure headsets. (Madonna)
 - 4- AKG with Lapel Mics.

Mic Stands, Music Stands and Music Stand Lights:

- 6- Table stands.
- 12- Boom stands.
- 6- Standard straight stands.
- 4- Kick stands.
- 12- Music stands.
- 12- Music stand lights.

Clear Com, Intercom System:

- Seven (7) wired headphone and belt packs, with access ports located throughout the Auditorium.

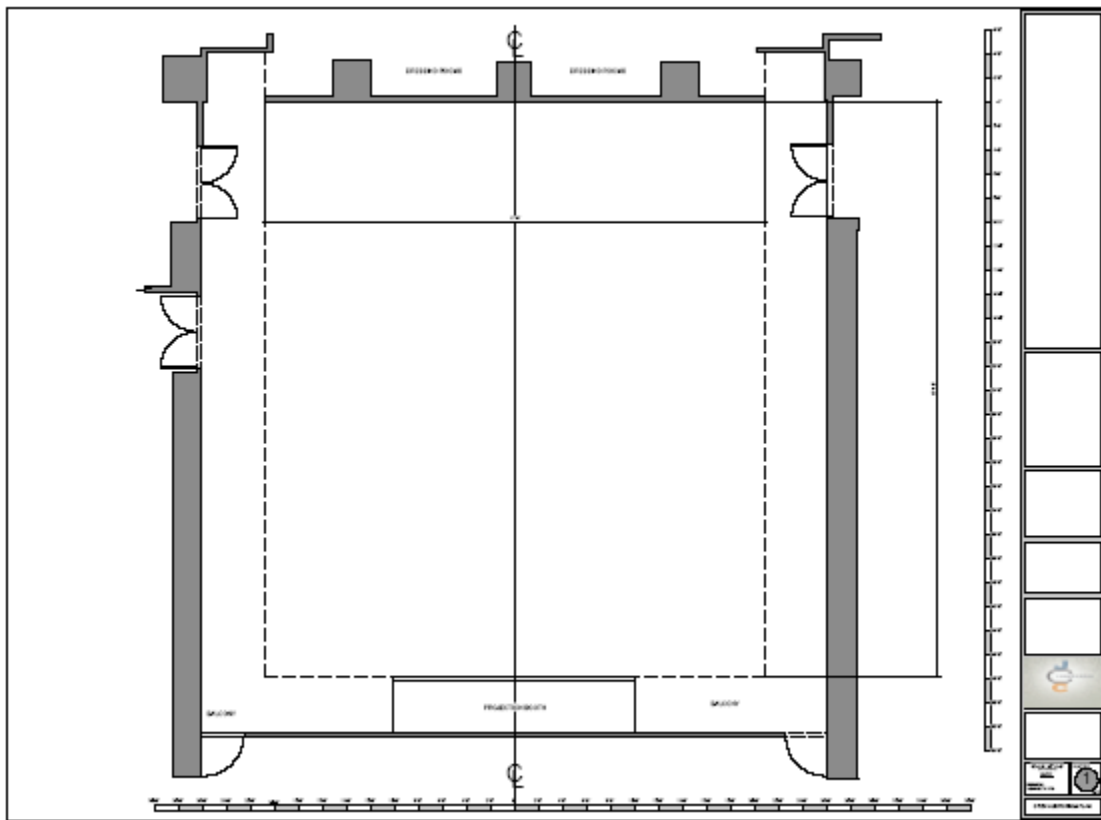
Wireless assisted listening system.

- Twelve (12) wireless headphones for hearing impaired or language translation.

**The JCC Auditorium
Performance Equipment Inventory.**



Auditorium Ground Plan Plate 1:

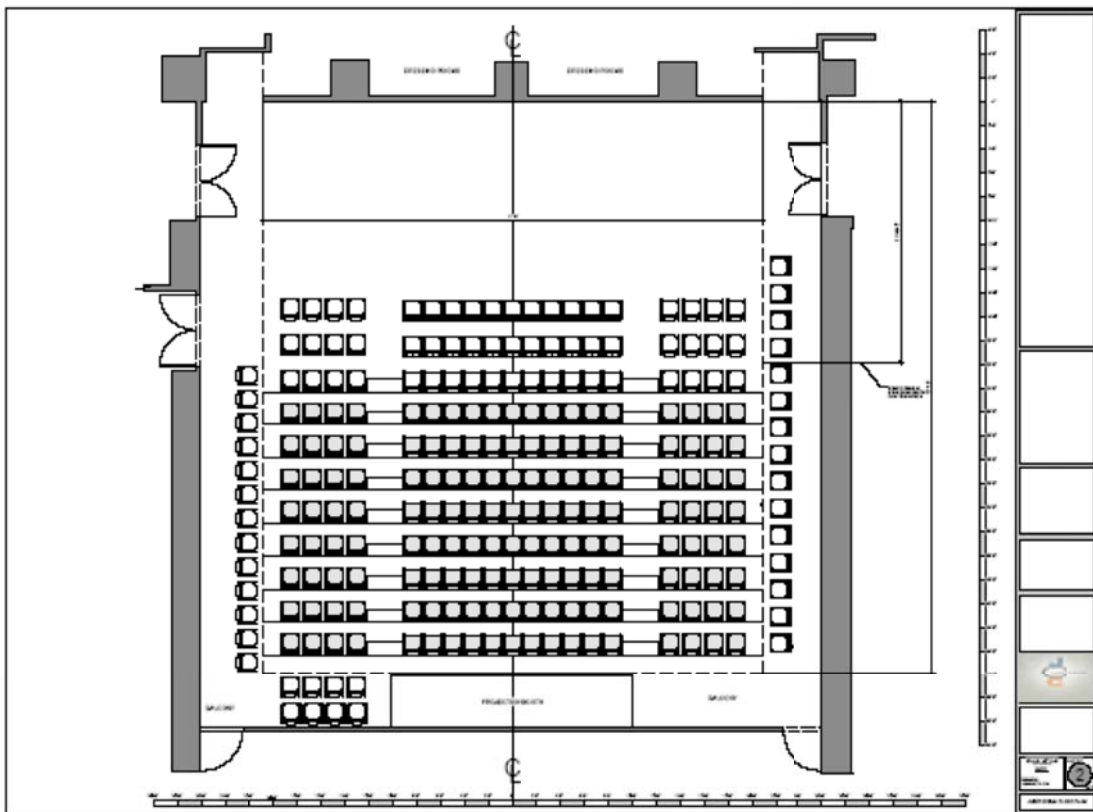


To receive this plate as a PDF file contact the JCC's audio visual and theatre production manager.

Stage Dimensions Without Seats: 40' wide x 52' Deep

The JCC Auditorium

Auditorium Seating Plan Plate 2:



To receive this plate as a PDF file contact the JCC's audio visual and theatre production manager.

Version A: 245 seats (Smallest Stage Area)

- Allows for the maximum number of seats in the theatre and smallest stage area.
- 8 Rows Bleacher seats (152), 3 rows of chairs in front (57) and (36) seats on the balcony level.
- Recommended for lectures and film.
- Dimensions of stage: 40' wide x 13'-6" deep

Version B: 207 seats (Typical Stage Area)

- Allows for the typical number of seats in the theatre and typical stage area.
- 8 Rows Bleacher seats (152), 1 row of chairs in front (19) and (36) seats on the balcony level.

The JCC Auditorium Performance Equipment Inventory.

-Recommended for music, theatre, dance and film.

-Dimensions of stage: 40' wide x 19'-6" deep.

Version C: 138 seats (Largest Stage Area)

-Allows for the minimum number of seats in the theatre and largest stage area.

-5 Rows Bleacher seats (95), 1 row of chairs in front (19) and (24) seats on the balcony level. recommended for music, theatre and dance.

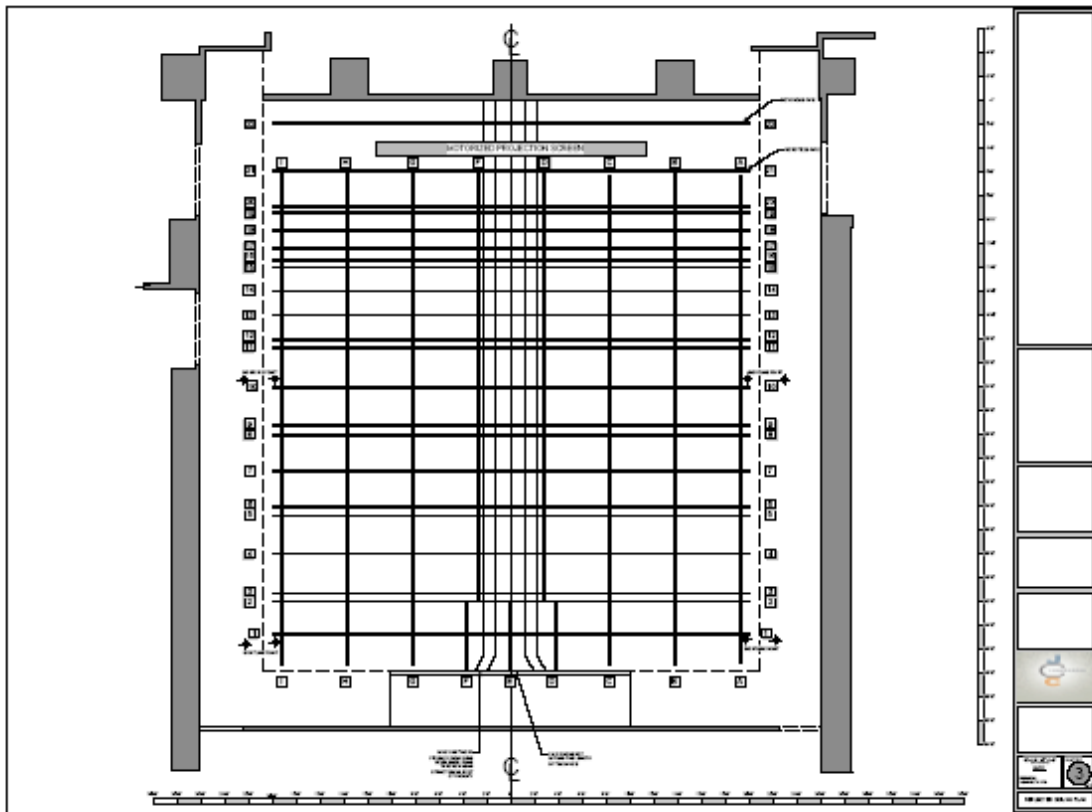
Dimensions of stage: 40' wide x 28' deep.

Cabaret Style: 75 seats maximum

-Small tables and chairs setup in "café" style.



Auditorium Grid Plan: Plate 3



**The JCC Auditorium
Performance Equipment Inventory.**

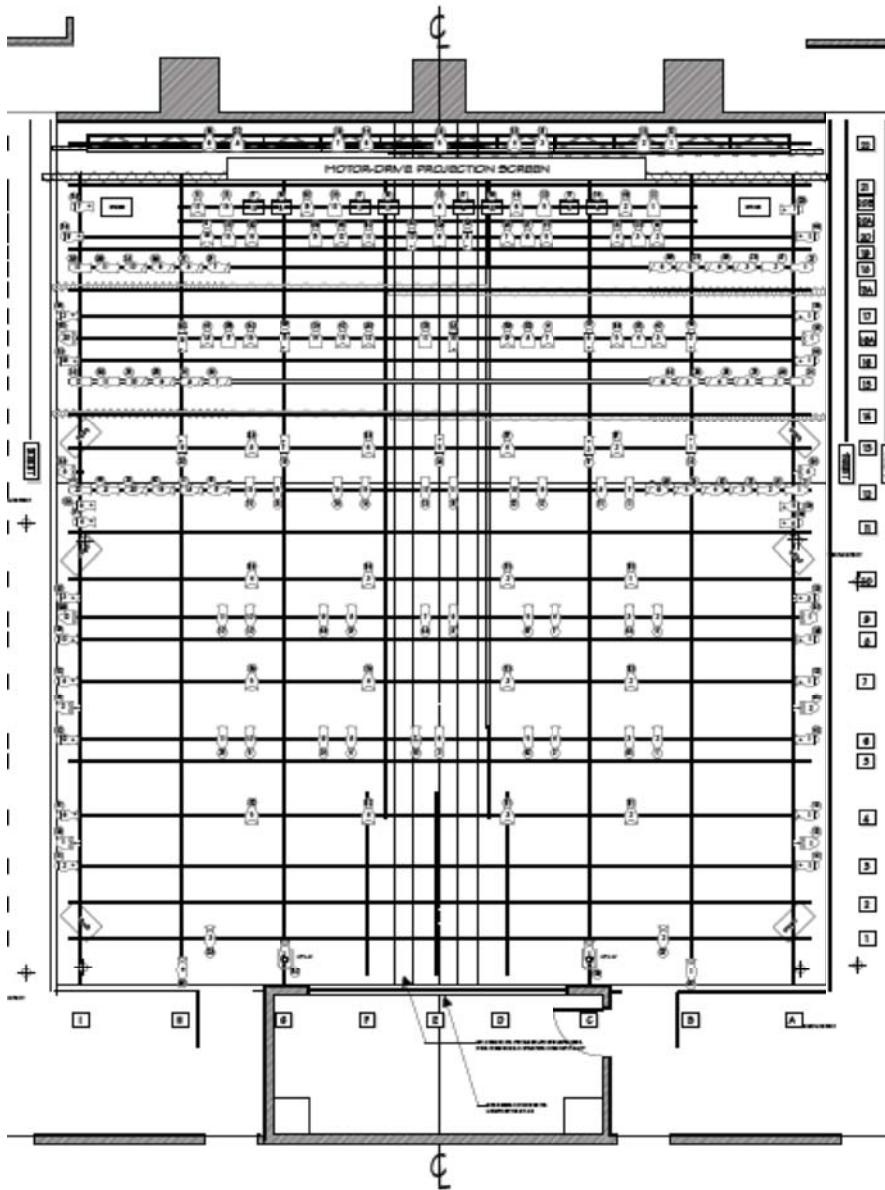
**To receive this plate as a PDF file contact the JCC's
audio visual and theatre production manager.**



The JCC Auditorium



Auditorium Repertory Light Plot: Plate 4



**The JCC Auditorium
Performance Equipment Inventory.**

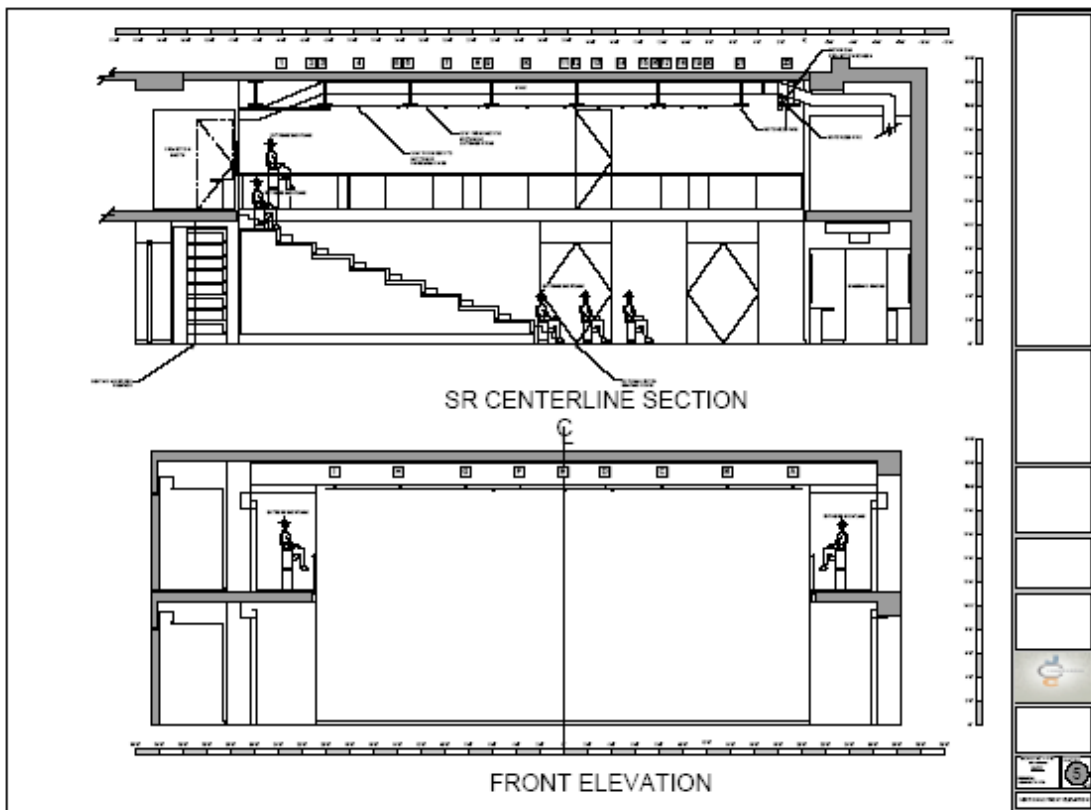
**To receive this plate as a PDF file contact the JCC's
audio visual and theatre production manager.**



**The JCC Auditorium
Performance Equipment Inventory.**



Auditorium Section Plan A: Plate 5

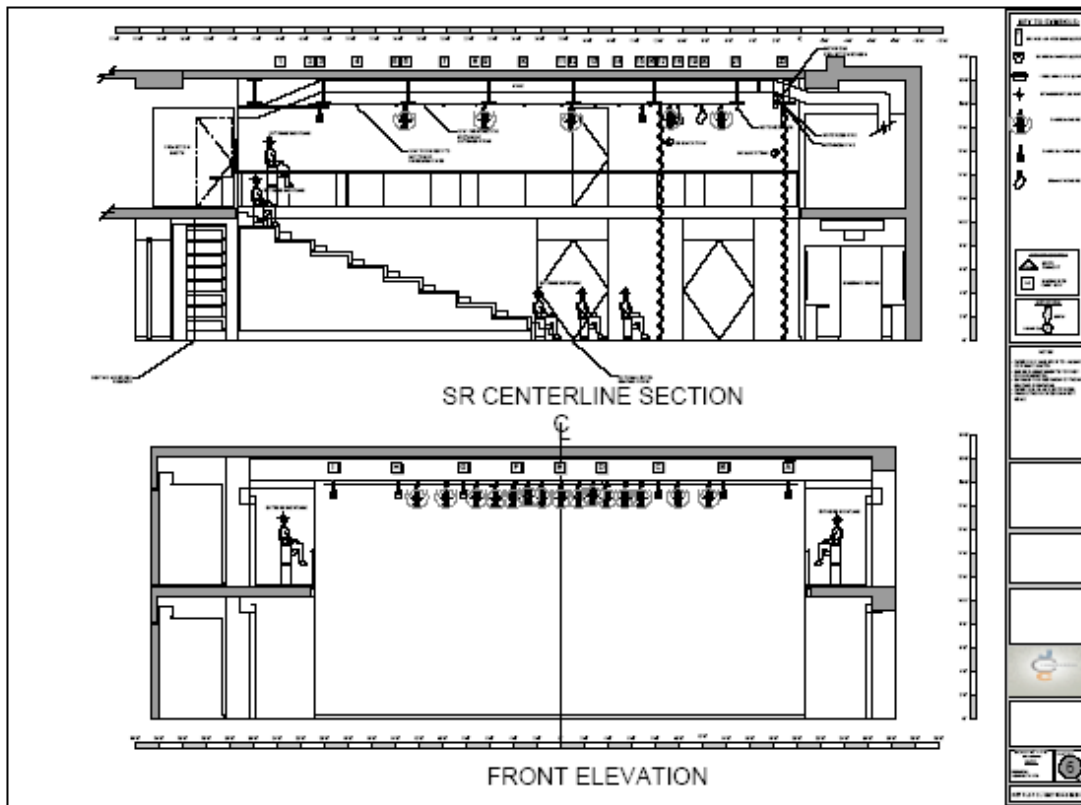


To receive this plate as a PDF file contact the JCC's audio visual and theatre production manager.

The JCC Auditorium
Performance Equipment Inventory.



Auditorium Section Plan B: Plate 6

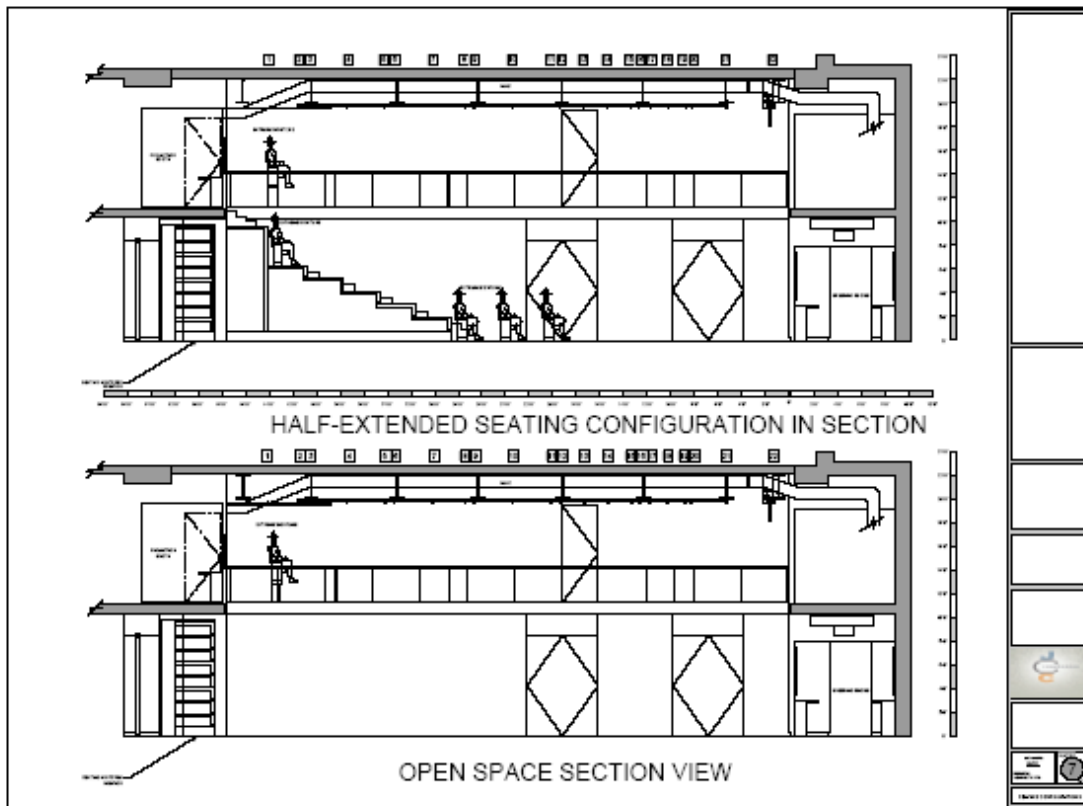


To receive this plate as a PDF file contact the JCC's audio visual and theatre production manager.

**The JCC Auditorium
Performance Equipment Inventory.**



Auditorium Section Plan C: Plate 7



To receive this plate as a PDF file contact the JCC's audio visual and theatre production manager.

The JCC Auditorium
Performance Equipment Inventory.



Contact Information

Karen Sander
Senior Director of Arts and Culture
(646) 505-4466
ksander@jccnyc.org

Megan Whitman
Arts and Culture Program Associate
(646) 505-4452
mwhitman@jccnyc.org

Yitzi Zablocki
Director of Film and Literary Programs
(646) 505-4404
yzablocki@jccnyc.org

Keren Toledano
Film and Literary Program Associate
(646) 505-4738
ktoledano@jccnyc.org

Jeff Fontaine
Director of Theater and Audio-Visual Services
(646) 505-4438
jfontaine@jccnyc.org

Jason Licht
Associate Audio/Video and Theatre Production Manager
(646) 467-9217
jlicht@jccnyc.org